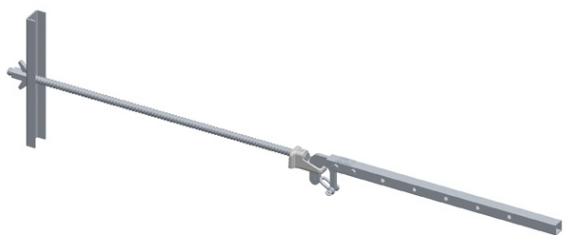


Technical sheet

Ref. 010121

Steel wall penetration kit for steel bracket and guardrail < 0,80 m

Fixing kits allow roof scaffolds and guardrails to be used for safe work.



FEATURES

Efficient, light and easy to assemble,
Not limiting in terms of space and assembly
Suitable for any type of roof (tile, slate, zinc, sloping or flat, new or renovation) or for the installation of solar panels
Meets the requirements of EN 13374 Class C

SPECIFICATIONS

Length (mm)	1750
Width (mm)	60
Height (mm)	400
Weight (kg)	0

Technical description

Comprises:

- 1 quick-release wall penetration for bracket < 0,80 m - Ø 20 mm x 0,80 m - ref. 20180
- 1 anti-lift attachment pin - ref. 20006

Actions : To work safely

Trades : Slate / Framework / Metal / Tile